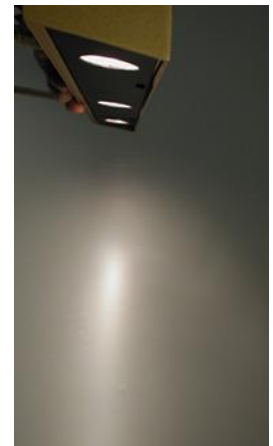
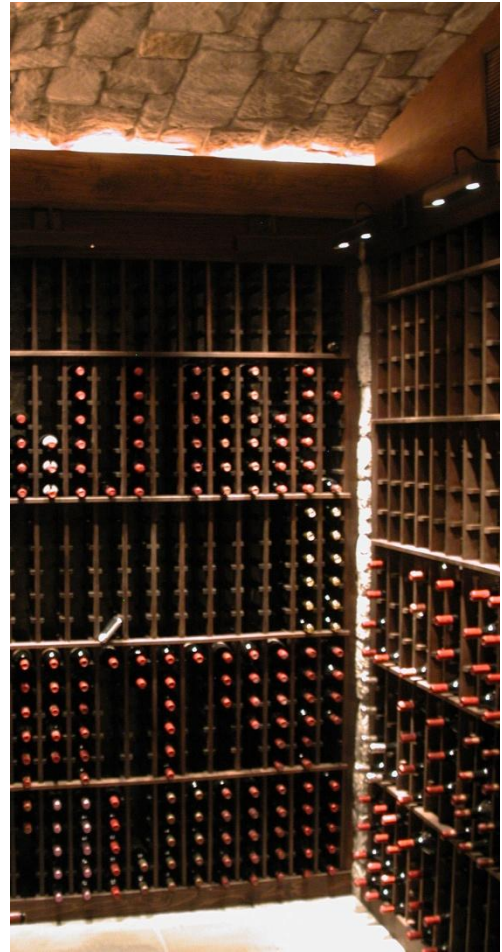


FineArtLight Bookcase Lights:

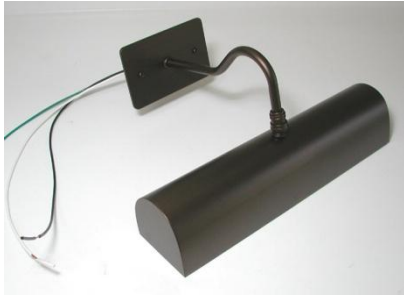
My very narrow optics work well for lighting tall bookcases and wine racks.



This is a cast Bronze 100mm box with ½" balls.

I make a number of different styles of bookcase lights with top arm entry or using a straight arm entering from behind.

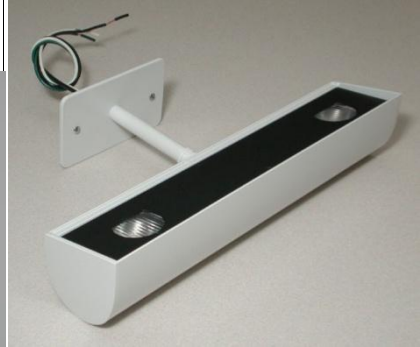
Three Styles:



Top entry bent arm



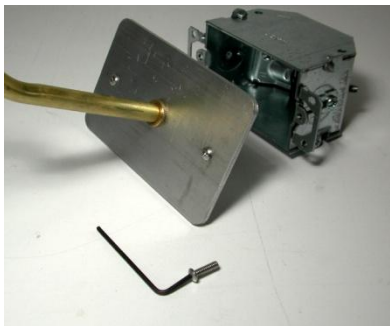
Cast Arm /cast box



Straight arm

Bookcase light can be made up to 96" long with rear entry straight arms. Top mounted arms are limited to locations between lamps.

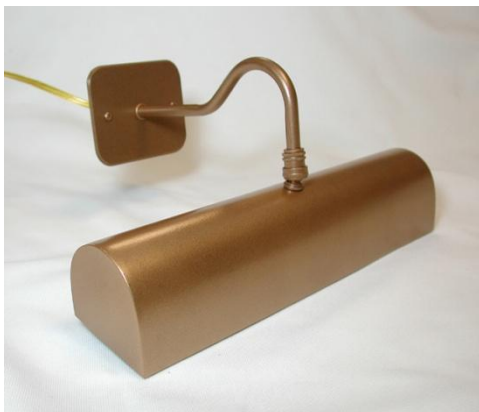
Various mounting plates: custom shapes available



3x5 plate



Narrower (switch box) Plate

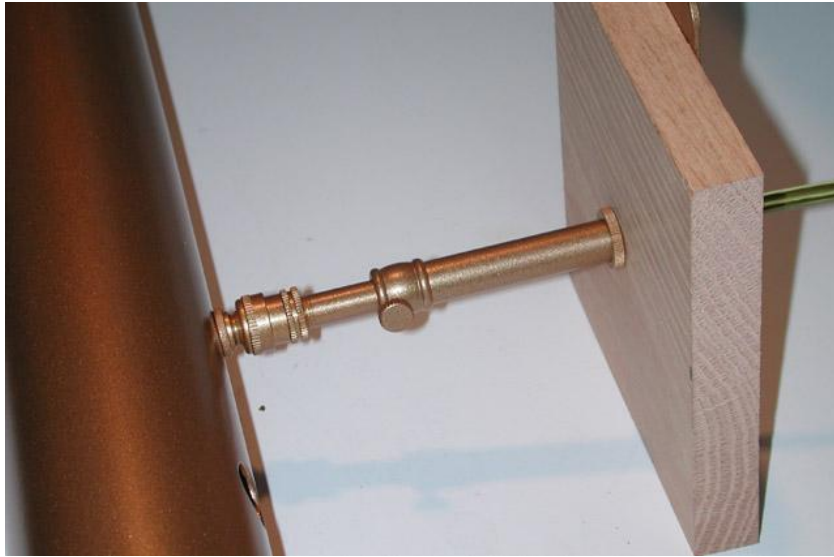


4x5 plate

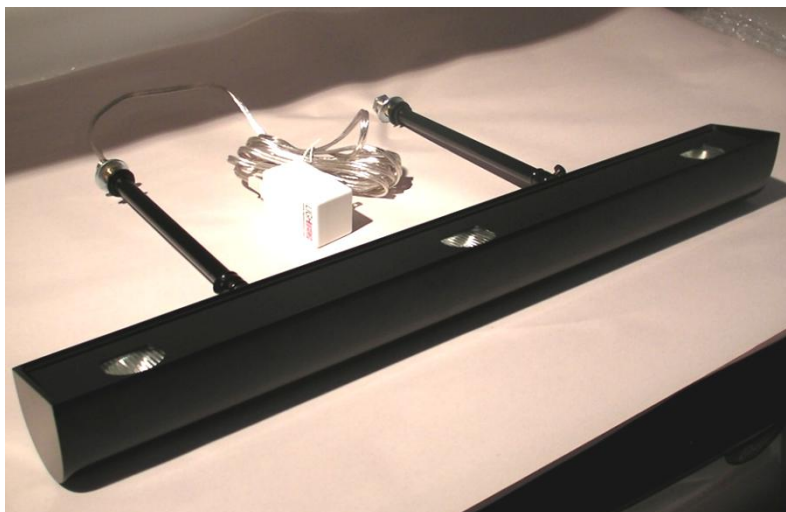


2.5" dia. Round

Here is a detail for installing an adjustable arm into a bookcase face board with no visible plate.

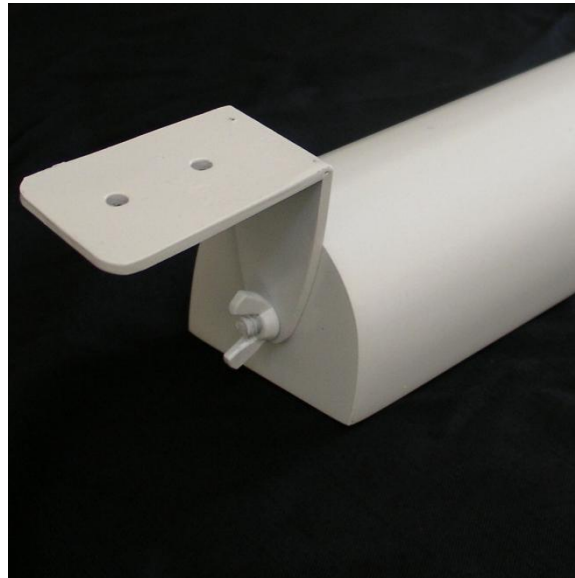


The 1/2" Brass pipe is threaded for thickness up to 7/8"



This one is a turned out bracket that can be mounted to the underside of a surface inside cabinets. I can also re-space the lamps so they line up with glass doors. It also can be mounted in coves or surface mounted as an uplight.

This has a ¼-20 wing nut to hold in in place



FineArtLight LLC 1236 Wood Station Place, Manchester, Missouri
63021 Copyright 2010

www.FineArtLight.com Contact David Munson 314-369-3913